

# Design Profit® 8.1 Release Notes

---



## What's New in DP8.1?

### ✓ Gantt Chart

- Drag and drop assemblies on to the source box to automatically generate Gantt charts just like reports.
- Create a Gantt chart manually by adding a task list to the scheduling area.
- Import and Export Microsoft Project files.

### ✓ Chinese Translation

- Set the language locally and share projects in both English and Chinese.

### ✓ Currency Preference

- Set the currency display for your project
- Projects will default to the native currency system

### ✓ Additional Changes

- New Look User Interface.
- Increased performance of Formula Evaluation and Synchronization
- Additional Formula Function for Option/Option Sets
- Symbol moving or re-parenting performance enhanced
- Adding or Renaming a file, Media Repository displays images, videos and files
- License Activation from Central Server without Web access
- Option to automatically apply for software updates
- Ability to save selected Report Fields to load into a different Report
- Report Pages can now be Snapshotted and wrote to a Folder



- Updated Built-In Materials names, descriptions and costs
- Capability of High-Resolution Snapshots of Rollups
- Added Multiple Symbol Copy/Paste feature to allow Symbols at differing Diagram Levels to be copied all at once
- Enhanced ability to Drag & Drop files directly onto Symbol. Image and Video Files are added as Media Files. Other files added as Attached Files
- Custom Field Manager Form can Protect/Unprotect a selection of Custom Fields
- Redesigns “Removed” Symbols properties can be viewed by “Double Clicking”
- Added Weight Unit Metric Ton (Tonne) and Length Units Kilometer and Mile

✓ **New Advanced Feature for System Administrators**

The DP8 client is now able to run via Terminal Services.

- Client workstations can function with minimal computing specs (they can be dumb terminals).
- Databases have a configuration file setting, allowing you to locate them in the local app file so multiple users can run DP over the terminal server without conflict.
- Central Server can now run at the root of the website instead of running as a website.



Contact [support@designprofit.com](mailto:support@designprofit.com) with inquiries about using this feature.

Please continue scrolling for some detailed showcases of the newest additions.

We value our users and we remain committed to providing real-world solutions to support you.

Current maintenance customers, please check for updates to receive the latest enhancements. The new update package is available for purchase to those not currently participating in the maintenance program. For training needs, please contact us at [support@designprofit.com](mailto:support@designprofit.com)

# The Design Profit Development Team

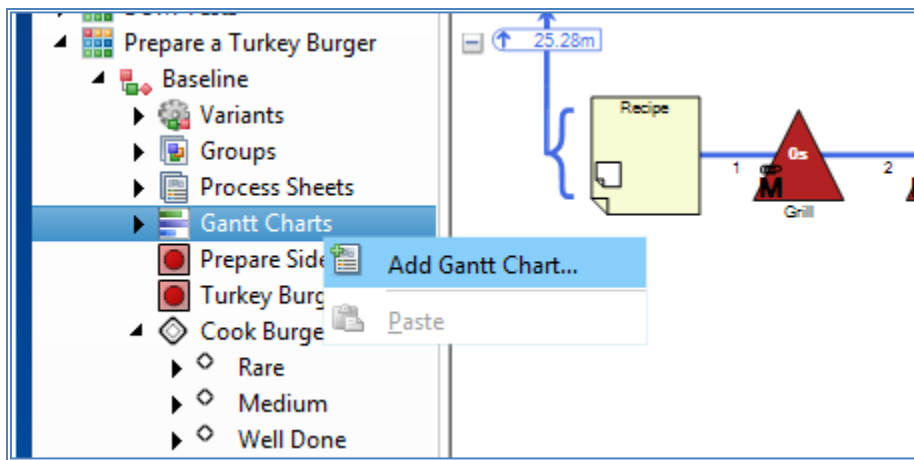
## Feature Details

### Gantt Charts

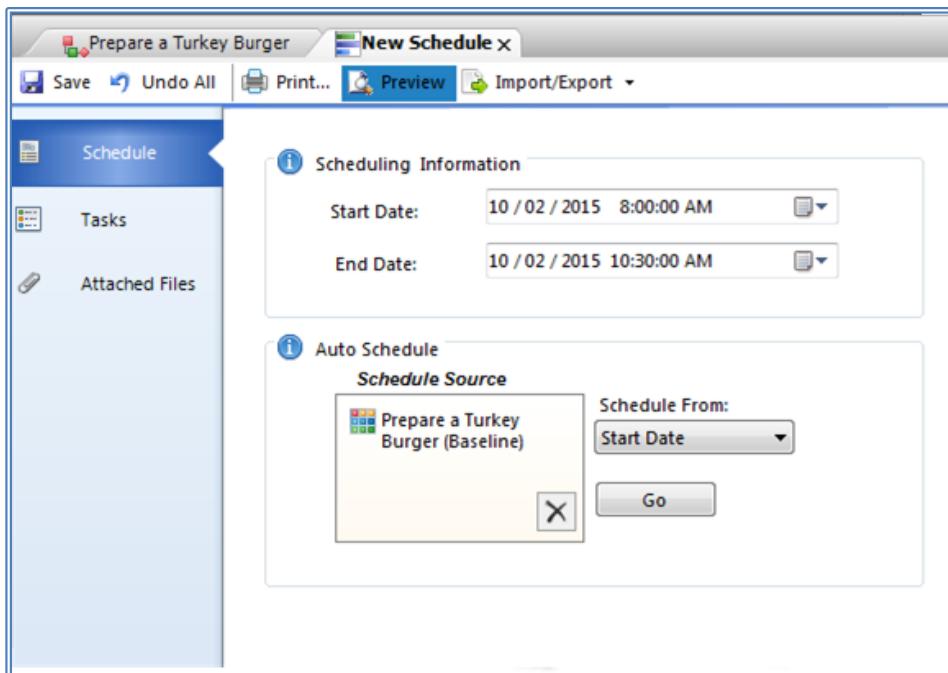
Two methods can be used to generate a Gantt chart. Auto Schedule creates the timing chart based on an existing diagram. You can also create a Gantt chart by scheduling your tasks manually.

- **Auto Schedule**

From the Project Window, right-click on Gantt Charts and select “Add Gantt Chart.”

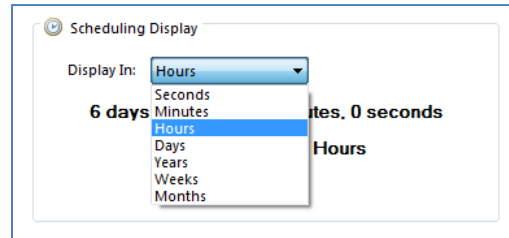


Drag the assembly into the **Schedule Source** box and select “Go.”

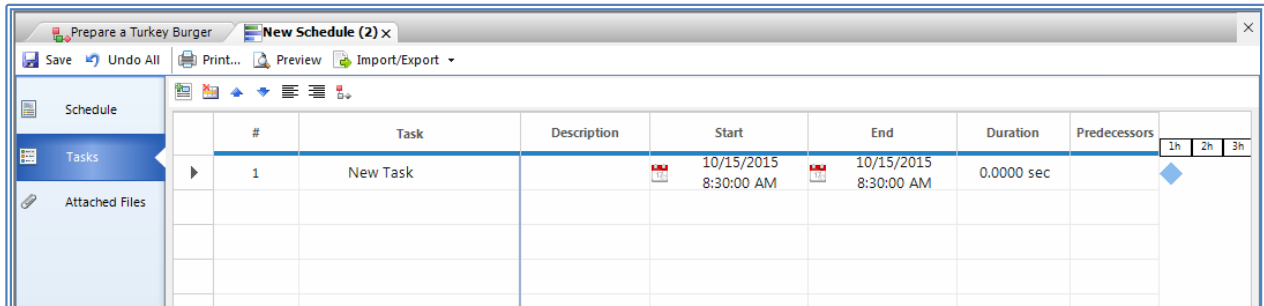


- **Manual Schedule**

Set up the Starting and End Dates on the **Schedule** screen. Then choose the units (hours, minutes, seconds, days, etc.) for the timing chart scale.

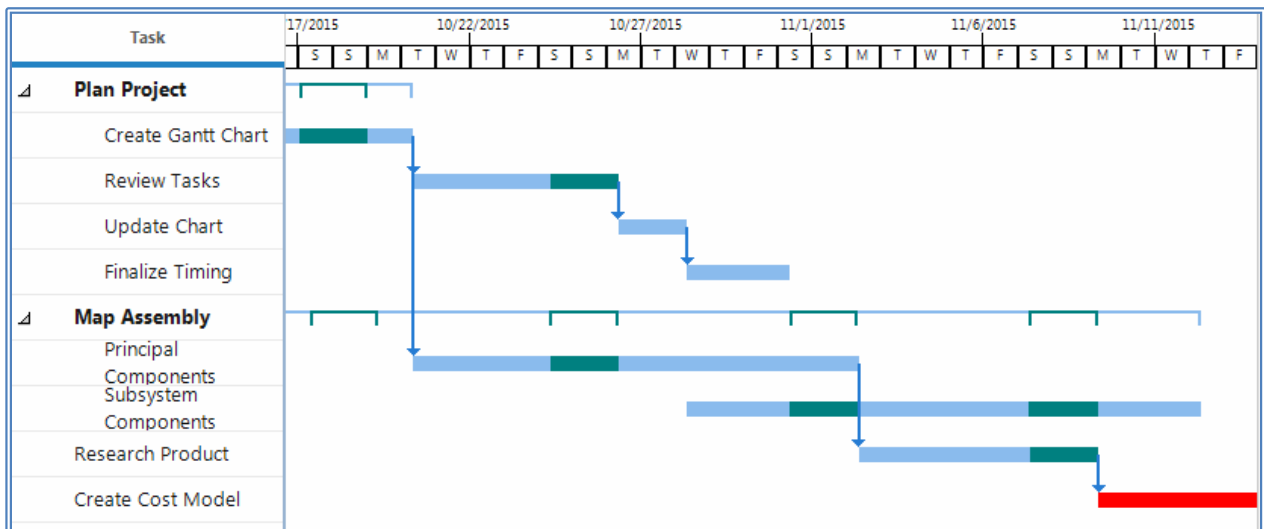


You can manually add tasks to a new chart or edit an existing project schedule from the **Tasks** screen.



- **Gantt Chart Display**

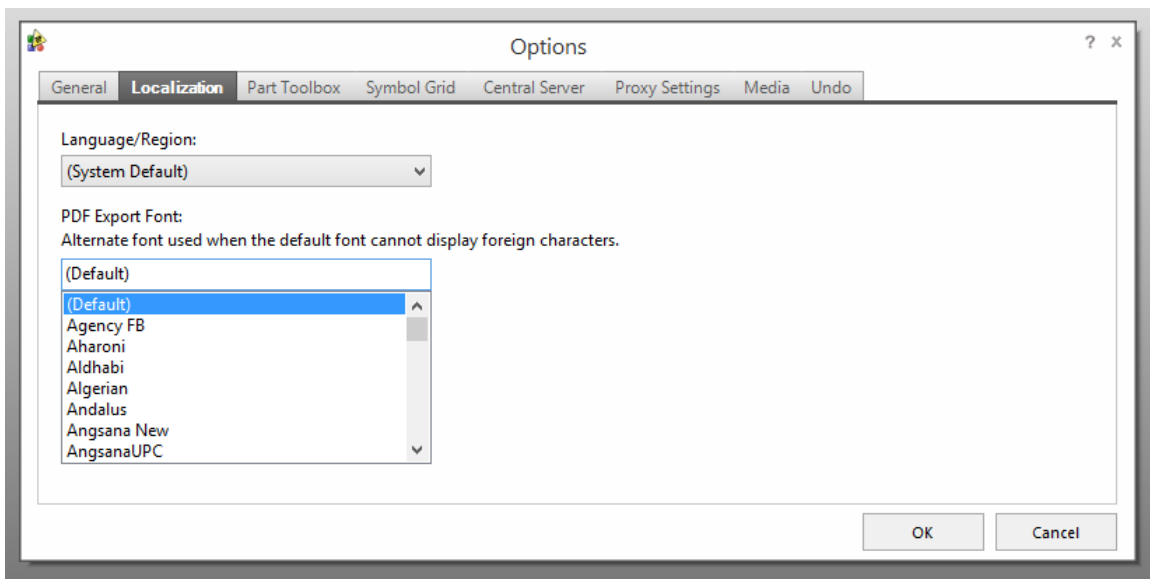
The bar chart reflects the duration of each task and how the task timing relates to other tasks. You can scroll to the desired time block for particular tasks. The bars also use colors to indicate task precedence, down time, and any errors in the scheduling.



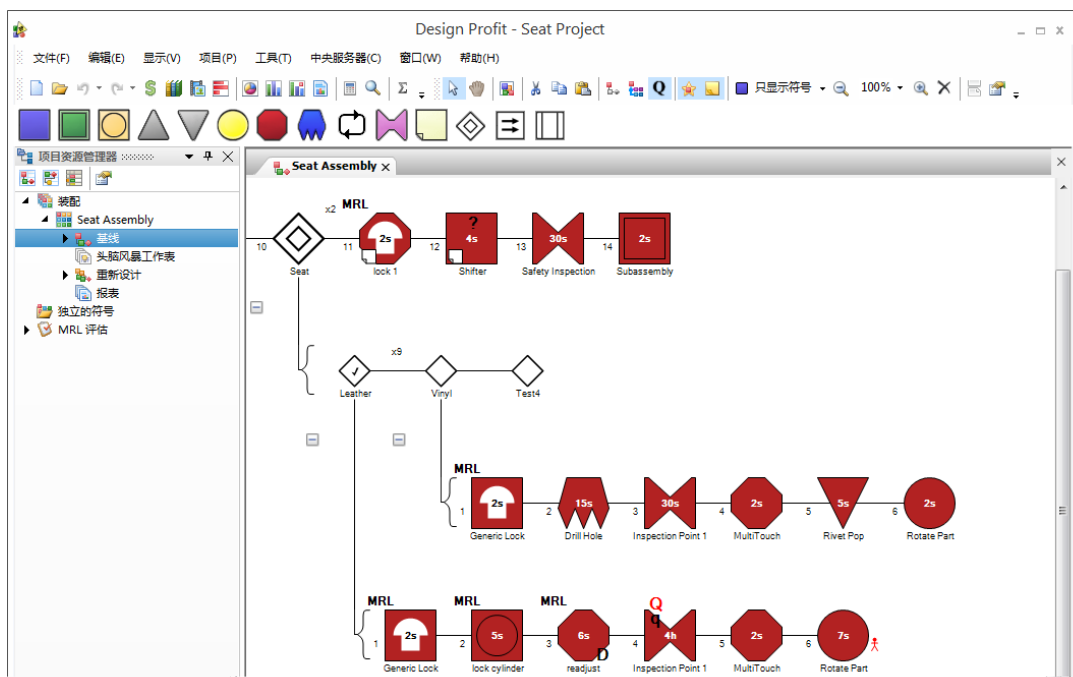
## Chinese Translation

Design Profit® can be set to Chinese through the Localization Tab on the Design Profit Options Form (Main Menu => Tools => Options).

Simply **select** English or Chinese from the “Language/Region” drop down menu. Alternatively, if you have already set up your machine through the computer’s Region and Language setting, set this to “System Default.”

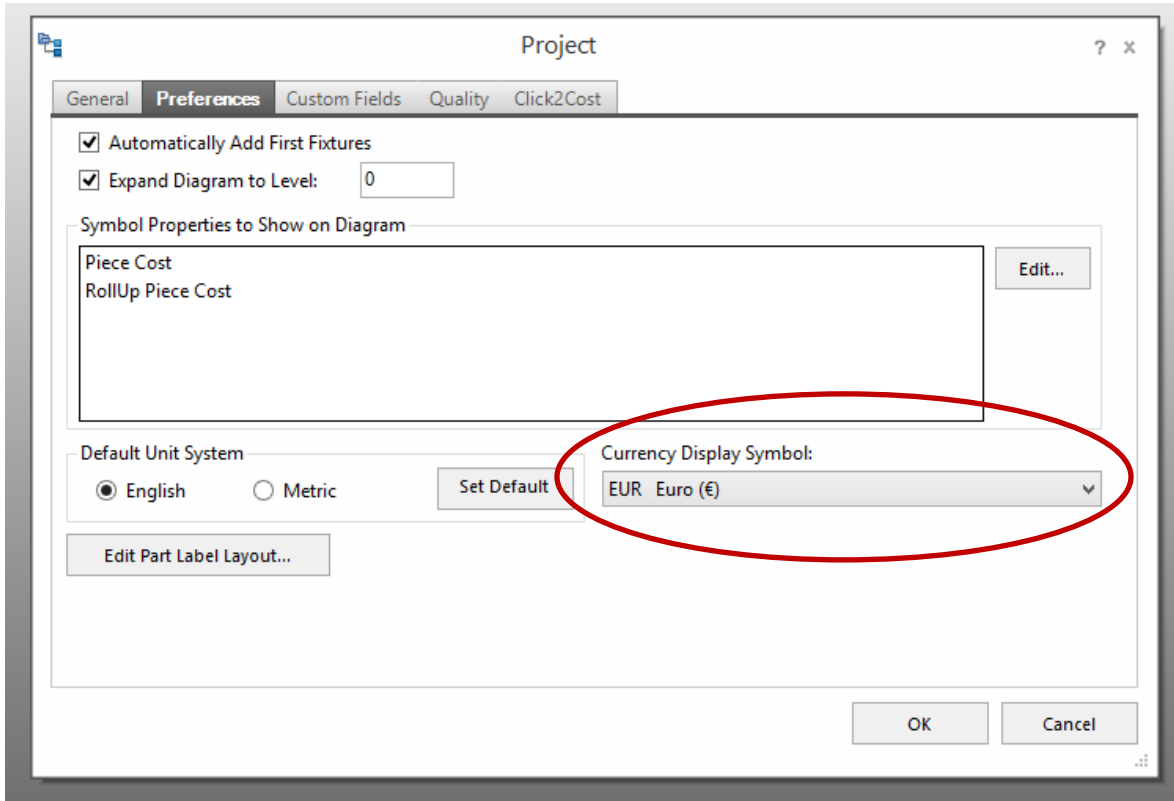


Note that changing the language allows projects to be shared between locales, but the *names* of projects, assemblies, symbols, etc. will remain in their original language.



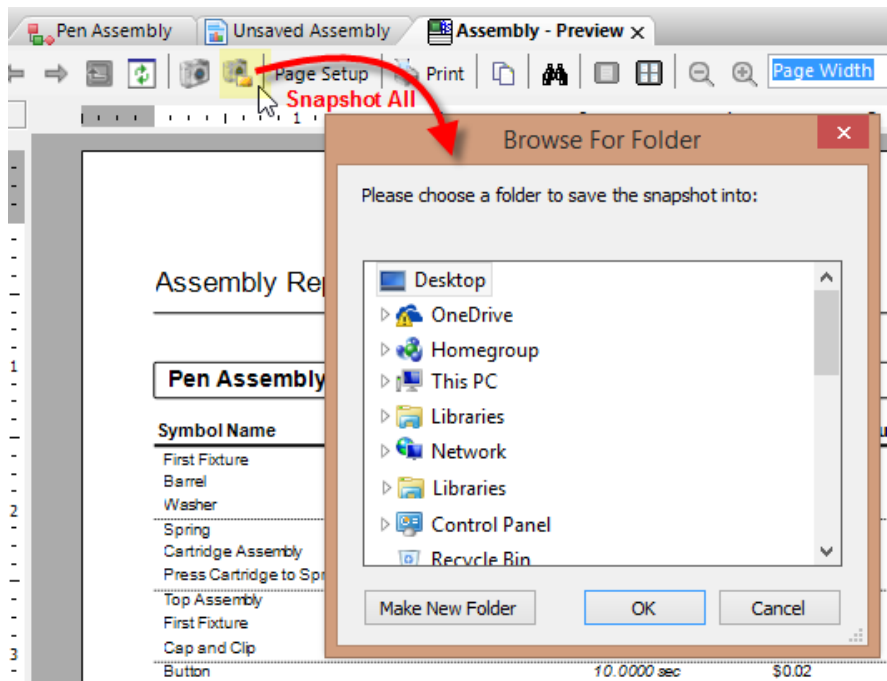
## Currency Preference

The currency preference can now be set from the Preference Tab of the Project Properties Form (Main Menu => Project=> Project Properties). Use the drop down menu to select a symbol to display for the currency unit.



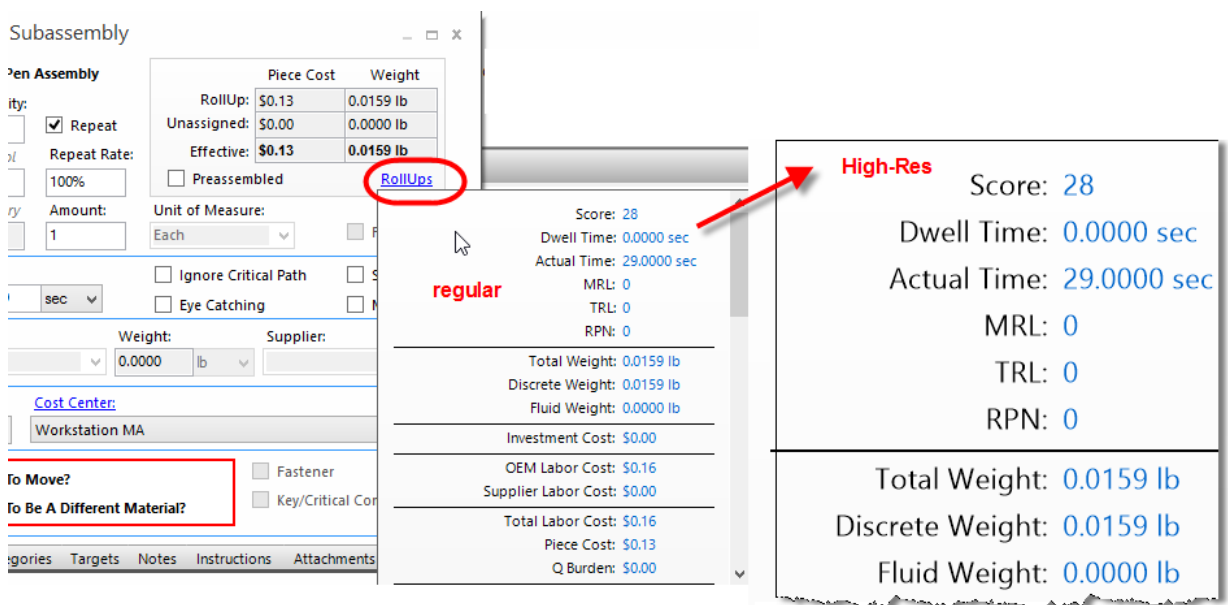
## Snapshot All Report pages

Reports are something you want to keep and review. “*Snapshot All*” allows you to immediately save pictures of each page on your report to anywhere you want.



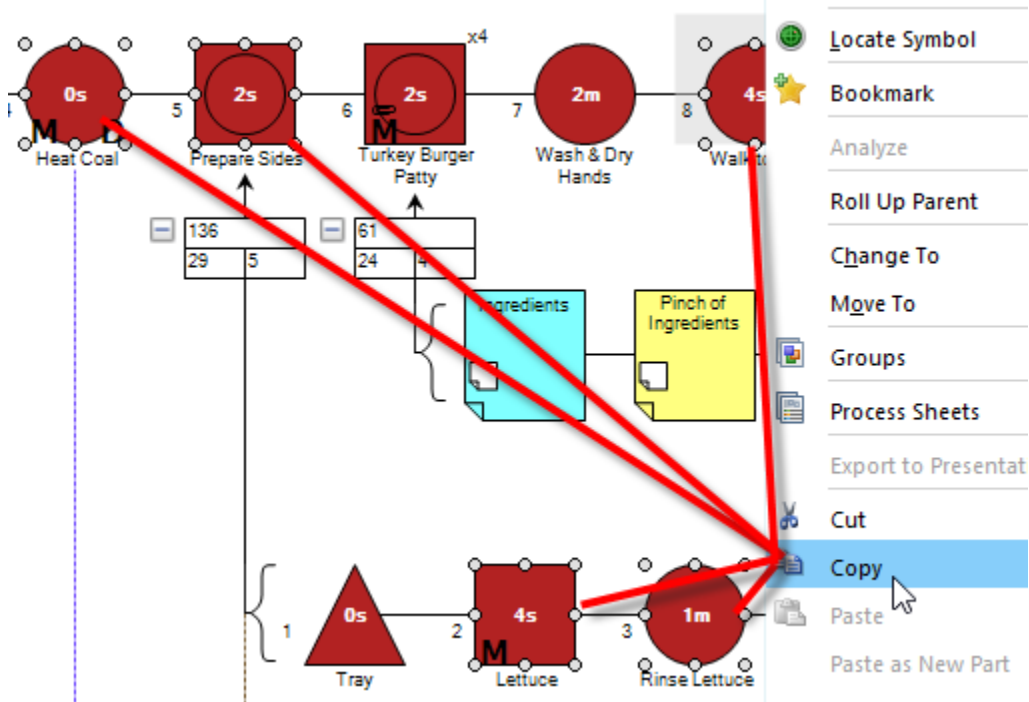
## High-Resolution Rollups Snapshot

People love their rollups. The fastest way to check your totals can now be snapshot out of the software as a high-res image in one click!



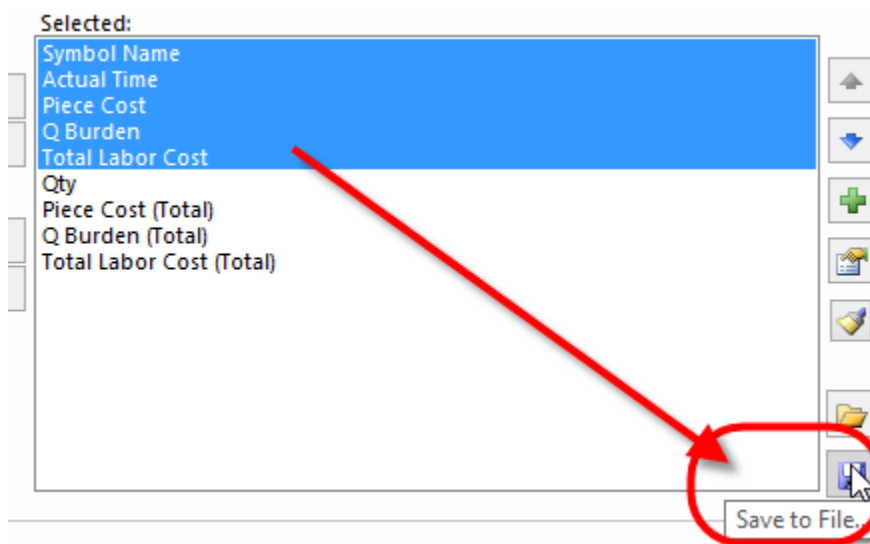
## Copy/Paste Multiple Symbols From Various Locations

Symbols can now be copied & pasted out of sequence from anywhere in the diagram, and all at the same time.



## Save & Load Report Fields across Projects

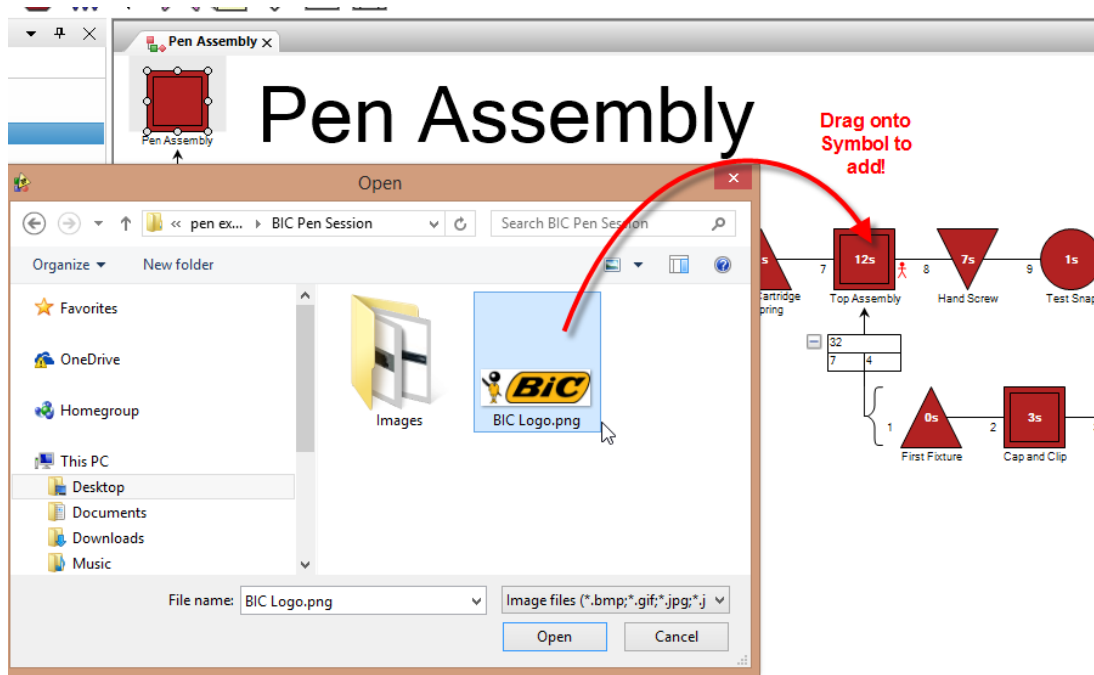
Report fields can now be saved & loaded from a file. This lets you keep and load up your favorite fields anytime, even in a different project.





## Media & Attached Files Can Now Be Dragged Onto Diagram Symbols

In one quick action, dragging media or attached files onto the symbol now adds them as content within the symbol.



The Design Profit® interface now has an updated look and feel. This change brings DP more in line with recent Microsoft Windows® versions. The basic functionality and location of menu items, etc. has not significantly changed however.

Upgrades to the software architecture allows for performance improvements as well.

We look forward to your feedback as we continue to enhance and improve to provide the best quality software.